

This information is for promotional purposes only. Space considerations may require information to be omitted. Always refer to the actual package for complete label verbiage. This product may not yet be available or approved for sale or use in your area.

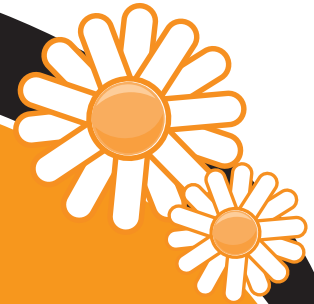


Prentox®

Pyronyl™ Oil Concentrate #525

With Pyrethrins,
a Floral Insecticide

5% Pyrethrins, 25% PBO



FOR USE BY TRAINED PERSONNEL ONLY.

ACTIVE INGREDIENTS:

Pyrethrins	5.0%
Piperonyl Butoxide Technical*	25.0%
OTHER INGREDIENTS**:	70.0%
TOTAL:	100.0%

*Consists of 20% (butylcarbityl)(6-propylpiperonyl) ether and 5% related compounds.

**Contains Petroleum Distillates

This product contains 0.367 pounds of Pyrethrins and 1.83 pounds of Piperonyl Butoxide Technical per gallon.

**KEEP OUT OF REACH OF CHILDREN
CAUTION**

See inside label booklet for First Aid, Precautionary Statements
and Directions for Use including Storage and Disposal instructions.
For Chemical Spill, Leak, Fire, or Exposure, Call: CHEMTREC 1-800-424-9300
For Medical Emergencies Only, Call: 866-257-4118



EPA Reg. NO. 655-471

Manufactured for: PRENTISS LLC
501 Cascade Pointe Lane, Suite 103, Cary, NC 27513



TM
PYRONYL OIL CONCENTRATE #525
 FOR USE BY TRAINED PERSONNEL ONLY.

ACTIVE INGREDIENTS:

Pyrethrins 5.00%
 Piperonyl Butoxide Technical* 25.00%

OTHER INGREDIENTS:** 70.00%
 TOTAL 100.00%

*Consists of 20% (Butylcarbonyl)(6-propylpiperonyl) ether and 5% related compounds. **Contains Petroleum Distillates
 This product contains 0.367 pounds of Pyrethrins and 1.83 pounds of Piperonyl Butoxide Technical per gallon.

PRENTOX® - Registered Trademark of Prentiss Incorporated PYRONYL™ - Trademark of Prentiss Incorporated

KEEP OUT OF REACH OF CHILDREN	
CAUTION	
FIRST AID	
Have the product container or label with you when calling a poison control center or physician, or going for treatment.	
If swallowed	<ul style="list-style-type: none"> • Immediately call a Poison Control Center, physician, or the National Pesticide Information Center at 1-800-858-7378. • Do not induce vomiting unless told to do so by the Poison Control Center or physician. • Do not give any liquid to the person. • Do not give anything by mouth to an unconscious or convulsing person.
If on skin or clothing	<ul style="list-style-type: none"> • Take off contaminated clothing. • Rinse skin immediately with plenty of water for 15-20 minutes. • Call a Poison Control Center, physician, or the National Pesticide Information Center at 1-800-858-7378 for treatment advice.
If in eyes	<ul style="list-style-type: none"> • Hold eye open and rinse slowly and gently with water for 15-20 minutes. • Remove contact lenses, if present, after the first 5 minutes, then continue rinsing eye. • Call a Poison Control Center, physician, or the National Pesticide Information Center at 1-800-858-7378 for treatment advice.
If inhaled	<ul style="list-style-type: none"> • Move person to fresh air. • If person is not breathing, call 911 or an ambulance, then give artificial respiration, preferably mouth-to-mouth, if possible. • Call a Poison Control Center, physician, or the National Pesticide Information Center at 1-800-858-7378 for treatment advice.
NOTE TO PHYSICIAN: Contains petroleum distillate - vomiting may cause aspiration pneumonia.	
For information on this pesticide product (including health concerns, medical emergencies, or pesticide incidents), call the National Pesticide Information Center at 1-800-858-7378.	
SEE BELOW FOR ADDITIONAL PRECAUTIONARY STATEMENTS	
PRECAUTIONARY STATEMENTS	
HAZARDS TO HUMANS AND DOMESTIC ANIMALS	
CAUTION	
Harmful if swallowed. Keep out of reach of children. Avoid breathing spray mist. Avoid skin and eye contact. Wash thoroughly after handling and before eating or smoking.	
Do not allow children or pets to contact treated surfaces until spray has dried. Do not use on plants. Food should be removed or covered during treatments. All food processing surfaces should be covered during treatment or thoroughly cleaned before use. Remove pets and cover fish bowls before spraying.	
ENVIRONMENTAL HAZARDS	
This product is toxic to fish, birds and wildlife. For terrestrial uses, do not apply directly to water, or to areas where surface water is present or to intertidal areas below the mean high water mark. Do not contaminate water when disposing of equipment washwaters. Apply this product only as specified on this label.	
PHYSICAL HAZARDS	
Do not use, or store near heat or open flame. Exposure to temperatures above 130° F may cause bursting.	

EFFECTIVE IN THE CONTROL OF INSECTS LISTED ON THIS LABEL IF THE APPLICATOR FOLLOWS THE DIRECTIONS FOR USE AS SET FORTH ON THIS LABEL.

EPA Reg. No. 655-471 7/02a EPA Est. No. 655-GA-1

LOT NO. _____

Manufactured by:

PRENTISS INCORPORATED

Plant: Kaolin Road, Sandersville, GA 31082
 Office: C.B. 2000, Floral Park, NY 11002-2000

DIRECTIONS FOR USE

It is a violation of Federal law to use this product in a manner inconsistent with its labeling.

INDOOR USE AS A SPACE SPRAY UNDILUTED: The use of this product in food processing or food handling establishments should be confined to time periods when the plants or facilities are not in operation. Food should be removed or covered during treatments. All food processing surfaces should be covered during treatment or thoroughly cleaned before use.

FOR COCKROACHES ONLY: Apply at a rate of 1 ounce per 1000 cubic feet of space. Open all closets, cabinets, drawers, and other potential harborage. Direct spray toward ceiling and upper corners of the area and into, under and behind obstructions, cabinets, appliances and furnishings if the equipment and constructions of the treatment so allow. Keep area closed for at least 1 hour before ventilation. Repeat treatment as necessary. Sweep up and destroy fallen insects.

Close windows and doors and shut off ventilating systems. Use a fogger or vaporizer adjusted to deliver an aerosol spray (no droplets over 50 microns in diameter and 80% less than 30 microns). Apply at a rate of 1/2 ounce per 1,000 cubic feet of space. Direct the spray toward the ceiling and upper corners of the area behind obstructions. Keep the area closed for at least 15 minutes. Vacate the treated area and ventilate before reoccupying. Repeat treatment as necessary. Sweep up and destroy fallen insects.

The method of application will control COCKROACHES and exposed, accessible stages of FLIES, (including FRUITFLIES), MOSQUITOES, SMALL MITES, CHEESE SKIPPERS, BOXELDER BUGS, EARWIGS, ANTS and the following common stored product pests: GRANARY WEEVILS, RICE BEETLES, SPIDER BEETLES, MOTHS, MEDITERRANEAN FLOUR MOTHS, INDIAN MEAL MOTHS, TOBACCO MOTHS, YELLOW MEALWORMS, DARK MEALWORMS, GRAIN MITES, CADELLES and RED FLOUR BEETLES.

DRIED FRUIT PRODUCTS in storage or being processed, for control of CONFUSED FLOUR BEETLES, DRIED FRUIT BEETLES, INDIAN MEAL MOTHS, AND SAW-TOOTHED GRAIN BEETLES. Remove and destroy infested products. As noted above, disperse this product as a fine mist in the air above the trays and shelves. Do not apply to fruit directly. Use one-half ounce per 1,000 cubic feet of space. Repeat application at this dosage in any given month. Leave the room closed for one hour. Do not remain in treated areas and ventilate the area before re-entry. Sweep up and destroy fallen insects.

STORED FOOD: (Stored in multi-wall bags or cloth bags) in warehouses, storage rooms, flour mills, grain elevators, granaries for control of ANGOUMOIS GRAIN MOTHS, CADELLES, CONFUSED FLOUR BEETLES, INDIAN MEAL MOTHS, MEDITERRANEAN FLOUR MOTHS, RICE WEEVILS, SAW-TOOTHED GRAIN BEETLES, YELLOW MEALWORMS, CHEESE MITES, CHEESE SKIPPERS, CIGARETTE BEETLES, GRAIN MITES, GRANARY WEEVILS, DARK MEALWORMS, RED FLOUR BEETLES. Remove and destroy infested products. As noted above, disperse the product first by directing spray into corners, under pallets, and around stacks of packaged foods hitting as many insects as possible and then treat as a space spray.

Infested stored products should be fumigated or treated by other effective methods using an approved product intended for this purpose. Use a dosage of one-half fluid ounce per 1,000 cubic feet of space. Do not remain in treated areas and ventilate area before re-entry. This application will kill accessible, exposed stages of those stored product pests listed above. Sweep up and destroy fallen insects.

INDOOR USE AS A SPACE SPRAY, DILUTED: For use in conventional mechanical fogging equipment to kill FLIES, FRUIT FLIES, MOSQUITOES, SMALL FLYING MOTHS AND GNATS: Cover or remove exposed food and food handling surfaces. Close room and shut off all air conditioning or ventilating system equipment. Dilute 1 part concentrate plus 49 parts oil (refined kerosene) and mix well. Apply at the rate of 1 to 2 fluid ounces per 1,000 cubic feet filling the room with mist. Keep area closed for at least 15 minutes. Vacate treated area and ventilate before reoccupying. Repeat treatment when reinfestation occurs.

SURFACE SPRAY: To insure maximum control of crawling insects (ANTS, BOXELDER BUGS, CLOVER MITES, DRUGSTORE BEETLES, EARWIGS, LICE SPIDER BEETLES), dilute 1 part concentrate plus 49 parts oil (refined kerosene) and mix well and apply as a coarse wetting spray using approximately 1 gallon of spray mixture to 750 square feet of surface. Spray walls, floors and other surfaces of bins and storage and handling areas thoroughly, being especially careful to treat cracks, crevices and similar hiding places. Treat unloading, handling and processing areas and inside conveying processing and handling equipment. Spray thoroughly around the base of heavy machinery and equipment. Spray insects directly when possible.

For transit protection, clean and spray truck beds, boxcars, and ship's hold before loading. Thoroughly treat walls and floors and spray each layer of cartons or containers lightly as stacked.

To control INDIAN MEAL MOTHS, and ANGOUMOIS GRAIN MOTHS in stored grain, apply to the surface of binned grain at a rate of 1 gallon per 1,000 square feet. Apply at monthly intervals with the first appearance of moths and continuing until early fall. In case of severe infestation, break up webbing with rake before spraying and make a second application in two weeks. As an aid in control of MOSQUITOES, GNATS, WASPS AND SKIPPERS: treat walls ceilings, moldings, screens, door and window frames, beams, light cords and similar resting places.

CONTACT AND SURFACE SPRAY: For the control of roaches, dilute 2.5 ounces to make one gallon of finished solution in oil. Use a good sprayer adjusted to deliver a coarse, wet spray. Direct the spray into hiding places, cracks and crevices under pallets around containers of stored foods, around bases of machinery, behind shelves and drawers. Spray roaches directly whenever possible. Repeat application as necessary.

ANIMAL QUARTER USE (Cattle barns, horse barns, poultry houses, swine houses, zoos): As a space spray diluted for use in conventional mechanical fogging equipment to kill FLIES, MOSQUITOES, SMALL FLYING MOTHS AND GNATS, dilute 1 part concentrate plus 49 parts oil (refined kerosene) and mix well. Apply at the rate of 2 fluid ounces per 1,000 cubic feet of space above the animals. Direct spray towards the upper portions of the enclosure filling the room with moisture. Keep area closed for at least 15 minutes. Vacate treated area and ventilate before reoccupying. Repeat treatment when reinfestation occurs.

FOR USE IN FEDERALLY INSPECTED MEAT AND POULTRY PLANTS: Dilute one part concentrate with 5 parts base oil (refined kerosene) and use with a ULV spraying device at the rate of one ounce per 1,000 cubic FEET OF ROOM SPACE. Apply the spray into all cracks and crevices in woodwork, walls, floors, underneath sinks, behind pipes and in all places where these insects shelter. Contact as many insects as possible. Repeat as necessary for control of exposed or accessible stages of ROACHES, SILVERFISH, WATERBUGS, EARWIGS, ANTS, SPIDERS, FLIES, FRUIT FLIES, MOSQUITOES, SMALL FLYING MOTHS AND GNATS. Before using, exposed food products and packaging materials must be covered or removed. Facilities and equipment in Federally inspected meat and poultry plants must be washed with an effective cleaning compound followed by a potable water rinse after spraying.

OUTDOOR GROUND APPLICATIONS, UNDILUTED: To control ADULT MOSQUITOES, GNATS AND SMALL FLYING MOTHS To control ADULT MOSQUITOES, GNATS AND SMALL FLYING MOTHS, this concentrate is formulated to be diluted with a suitable oil diluent, such as, but not limited to, light mineral oil, deodorized kerosene or petroleum distillate, for use in cold fog aerosol generators. This concentrate may be diluted or used as supplied for mosquito control programs involving residential, industrial, recreational and agricultural areas, swamps, marshes, overgrown wastes areas, roadsides and pastures where adult mosquitoes occur.

Use in agricultural areas should be in such a manner as to avoid residues in excess of established tolerances for pyrethrins and piperonyl butoxide on crops or commodities.

Best results are expected from application when the meteorological conditions favor an inversion of air temperatures in the area treated, and when the wind is not excessive. Repeated applications may be made as necessary to obtain the desired reduction in adult mosquitoes.

This pesticide may be applied with equipment designed and operated to produce a suitable ultra low (ULV) spray application, which meets the dosage per acre objective of not more than .0025 pounds of pyrethrins and .0125 pounds of piperonyl butoxide per acre. For control of *Aedes Taeirorhynchus* in Florida, it may be necessary to use a dose of up to .008 pounds of pyrethrins and .04 pounds of piperonyl butoxide per acre.

Back pack applications may require a greater rate of dilution than the dilution used for vehicle or aircraft mounted sprayers, in order to achieve the desired rate of application of active ingredients per acre.

To control MOSQUITO LARVAE, dilute at the rate of 9 ounces per 50 gallons of oil and apply at the rate of 20 to 25 gallons per acre. Apply as a coarse wetting spray to the border or on shallow water of wet lands, swamps and marshes where mosquito larvae are known to breed.

TEMPORARY REDUCTION OF ANNOYANCE AND POTENTIAL VECTORS, UNDILUTED, from FLIES, MOSQUITOES and SMALL FLYING MOTHS OUTDOORS. The aforementioned application for outdoor ground application will afford temporary reduction of annoyance from these pests in public gathering places (drive-in restaurants, drive-in theaters, golf courses, municipalities, sewers, parks, playgrounds and recreational areas). Direct application into tall grass, shrubbery and around lawns where these pests may hover or rest. Apply while air is still. Avoid wetting foliage. Application should be made prior to attendance. Repeat as necessary.

FOR USE IN THERMAL FOGGING EQUIPMENT: Following the above directions and precautions, prepare a solution containing 0.1% pyrethrins and 0.5% piperonyl butoxide technical by mixing 2 ½ fluid ounces of this product with 125 ½ fluid ounces of fuel oil, refined soybean oil or light mineral oil, to equal one gallon of spray. Apply at a rate of not more than .0025 pounds of pyrethrins and .0125 pounds of piperonyl butoxide per acre. For control of nuisance species in Texas, it may be necessary to use a dose of up to .008 pounds of pyrethrins and .04 pounds of piperonyl butoxide per acre.

In additional outdoor areas (corrals, feed lots, swine lots and zoos), over water, drinking fountains and animal feed before use. Fill area with mist directing application into tall grass, shrubbery and around lawns where these pests may hover or rest. Apply while air is still. Avoid wetting foliage. In zoos, avoid exposure of reptiles to the product. Repeat as necessary.

FOR USE ON ANIMALS: To protect beef and dairy cattle, and horses from HORN FLIES, MOSQUITOES, AND GNATS, dilute 1 part of concentrate plus 49 parts oil (refined kerosene) and mix well. Apply a light mist sufficient to wet the tips of the hair. To control STABLE FLIES, HORSE FLIES, and DEER FLIES on beef and dairy cattle and horses. Apply 2 ounces per adult animal sufficient to wet the hair but not to soak the hide. Repeat treatment once or twice daily or at intervals to give continued protection.

To control the mobile stages of BLOOD SUCKING LICE on beef and dairy cattle, apply the spray to thoroughly wet the hair. Use 2 ounces or less per animal and repeat every 2 to 3 weeks as required.

STORAGE AND DISPOSAL

Do not contaminate water, food or feed by storage and disposal. Open dumping is prohibited.

STORAGE: If container is damaged: Stop any leaks by repositioning the container or by patching or otherwise repairing the leaks. Take care to avoid contact with pesticide and wear protective gear. On cleanup of spilled liquids, wear protective equipment as required to prevent contact with the product or its vapors. Cover the spilled areas with generous amounts of absorbent material, such as clay, diatomaceous earth, sand or sawdust. Sweep the contaminated absorbent on to a shovel and put the sweepings into a salvage drum. Dispose of wastes as below. Place any leaking container into a similar drum or glass container. Do not store, use, pour or spill near heat or open flame.

PESTICIDE DISPOSAL: Wastes resulting from the use of this product may be disposed of on site or at an approved waste disposal facility.

CONTAINER DISPOSAL: Triple rinse (or equivalent), then offer for recycling, or puncture and dispose of in a sanitary landfill, or by other procedures approved by State and local authorities.